



## ENERGY TECHNOLOGY INTEGRATION TEAM

# Residential Building Efficiency

The Energy Technology Integration Team is part of the Energy Policy & Economics (EP&E) Group at the Pacific Northwest National Laboratory (PNNL). Our team helps clients understand and address the challenges and issues associated with the performance, adoption, and deployment of new technologies, resulting in faster and stronger market acceptance. This brochure highlights the solutions, services, and results delivered by the team in support of **Residential Building Efficiency**. Other key focus areas served by the team include:

- » Commercial Building Efficiency
- » Renewable Energy Assessments
- » Technology Adoption.

The team's work in support of Residential Building Efficiency provides customers with expertise in the areas of third-party technology impact assessments, software development for technology deployment, and best practice guidance for contractors, home owners, and other stakeholders.

### RECENT IMPACTFUL RESULTS

Our staff support the U.S. Department of Energy's Building America program, conducting residential building science research and facilitating the transfer of research findings to the home building industry. Staff have developed climate-specific guides and climate-optimized packages of energy-efficiency measures for new home builders. Team members have put together popular retrofit guides for home performance contractors on topics such as insulation, HVAC, and air sealing upgrades. PNNL staff created the Building America Solution Center to provide the building industry with easy access to the Building America Program's wealth of building science information.

Team staff determined the performance and grid-integration potential of water heaters and evaluated the energy savings of other building technologies using PNNL's matched pair of Lab Homes. Find more information at: <http://LabHomes.pnnl.gov>

Members of our team helped establish important connections between DOE's Building America and residential codes programs. Collaboration between the programs has resulted in significant residential code innovations.

PNNL's work for the DOE stationary fuel cell program included facilitating the collaboration of stakeholders to address the timely acceptance of safe technology applications. These activities resulted in the development of standards to test and certify the safety of fuel cells (ANSI Z21.83 now CSA FC1) and fuel cell installations (NFPA 853).



Team staff designed a new online tool that provides home builders, contractors, and code officials with easy access to the DOE Building America Program's vast library of building science research. The Building America Solution Center is accessed by more than 10,000 visitors each month: <https://basc.energy.gov>

Key contributors to the Residential Building Efficiency focus area include:



**Chrissi Antonopoulos**  
**Energy Analyst**  
Building Energy Efficiency, Green Buildings, Socioeconomics, Environmental Valuation  
Chrissi.Antonopoulos@pnnl.gov



**Michael Baechler**  
**Senior Project Manager**  
Building Energy Efficiency, Environmental Planning & Management  
Michael.Baechler@pnnl.gov



**Pam Cole**  
**Buildings Efficiency Scientist**  
Building Energy Codes, Building Energy Efficiency  
Pam.Cole@pnnl.gov



**David Conover**  
**Senior Mechanical Engineer**  
Stationary Electrical Energy R&D, Building Energy Codes  
David.Conover@pnl.gov



**Theresa Gilbride**  
**Buildings Efficiency Scientist**  
Building Energy Efficiency  
Theresa.Gilbride@pnnl.gov



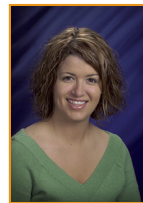
**Michael Hoffman**  
**Senior Electrical Engineer**  
Micro Grids, Renewable Assessments  
Michael.Hoffman@pnnl.gov



**Cheryn Metzger**  
**Senior Energy Efficiency Engineer**  
Building Energy Efficiency, Whole Building Performance, Lab Homes R&D  
Cheryn.Metzger@pnnl.gov



**Linda Sandahl**  
**Senior Project Manager**  
Energy Efficient Lighting, Building Energy Efficiency, Technology Adoption  
Linda.Sandahl@pnnl.gov



**Jamie Spangle**  
**Senior Project Coordinator**  
Project scope, schedule, and budget control  
Jamie.Spangle@pnnl.gov



**Anne Wagner**  
**Energy Research Engineer**  
Building Sensors & Controls, Smart Buildings, Lighting & Electrical  
Anne.Wagner@pnnl.gov

For more information, contact:

**Linda Sandahl**  
Linda.sandahl@pnnl.gov | 503.417.7554

**Todd Samuel**  
Todd.Samuel@pnnl.gov | 509.375.6707

<http://epe.pnnl.gov>

## RESIDENTIAL BUILDING EFFICIENCY

Our team is comprised of engineers, scientists, analysts, and code specialists with up to 30 years' experience in the residential buildings industry. This cross-cutting team excels at everything from R&D to deployment, but specializes in integrating all of these factors for a successful project.



Proudly Operated by **Battelle** Since 1965

